



# RESEARCH TO PRACTICE

ISLAMIC DEVELOPMENT BANK Group (IsDB Group)

*Together We Build A Better Future*

**Res**  **Prac**

**PAUWES**

**RESEARCH 2 PRACTICE  
FORUM 2018**

**ENERGY, WATER SECURITY  
AND CLIMATE CHANGE IN AFRICA**

**16th - 18th APRIL, 2018  
TLEMEN, ALGERIA**



African Union Commission



Federal Ministry  
for Economic Cooperation  
and Development



Federal Ministry  
of Education  
and Research

Supported by:

**giz**



DLR Projektträger

**DAAD**



Pan African University  
Institute of Water  
and Energy Sciences



UNITED NATIONS  
UNIVERSITY  
**UNU-EHS**  
Institute for Environment  
and Human Security



Center for Development Research  
Zentrum für Entwicklungsforschung  
University of Bonn

**ITT**

Institute for Technology and  
Resources Management in  
the Tropics and Subtropics



**Res**  **Prac**

# OUTLINE

- About IsDB Group and its Member Countries
- Key highlights of IsDB Group operations financing & active portfolio by sectors
- IsDB technical cooperation program
- Reverse Linkage cooperation model
- Cooperation Model with Research Institute and UN Agencies in Practice



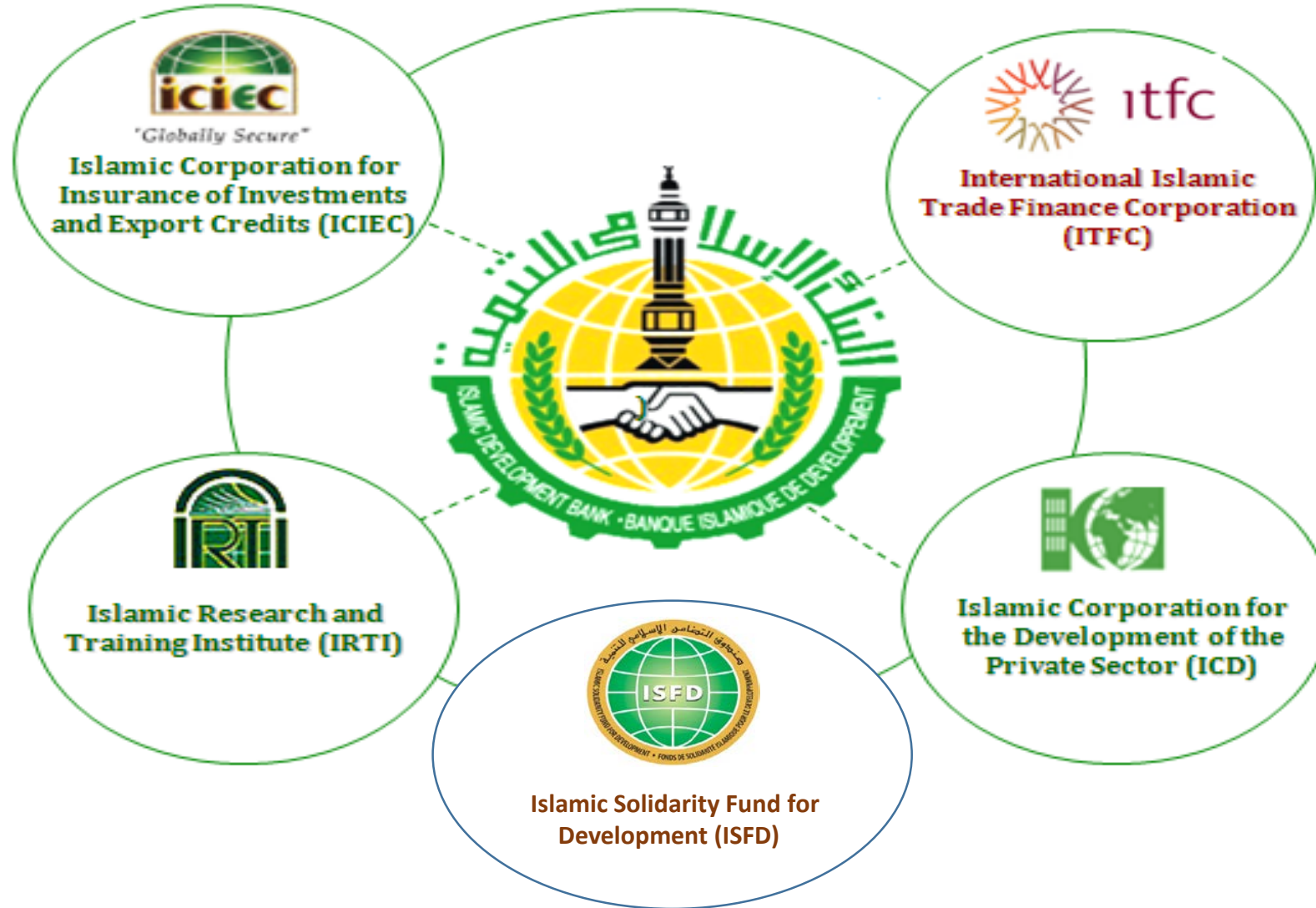
In 1960's

RMJ © www.visualphotos.com



Now in 2018

## IDB Group



# ISLAMIC DEVELOPMENT BANK



Multilateral  
development  
Bank



Membership  
drawn  
entirely from  
developing  
countries



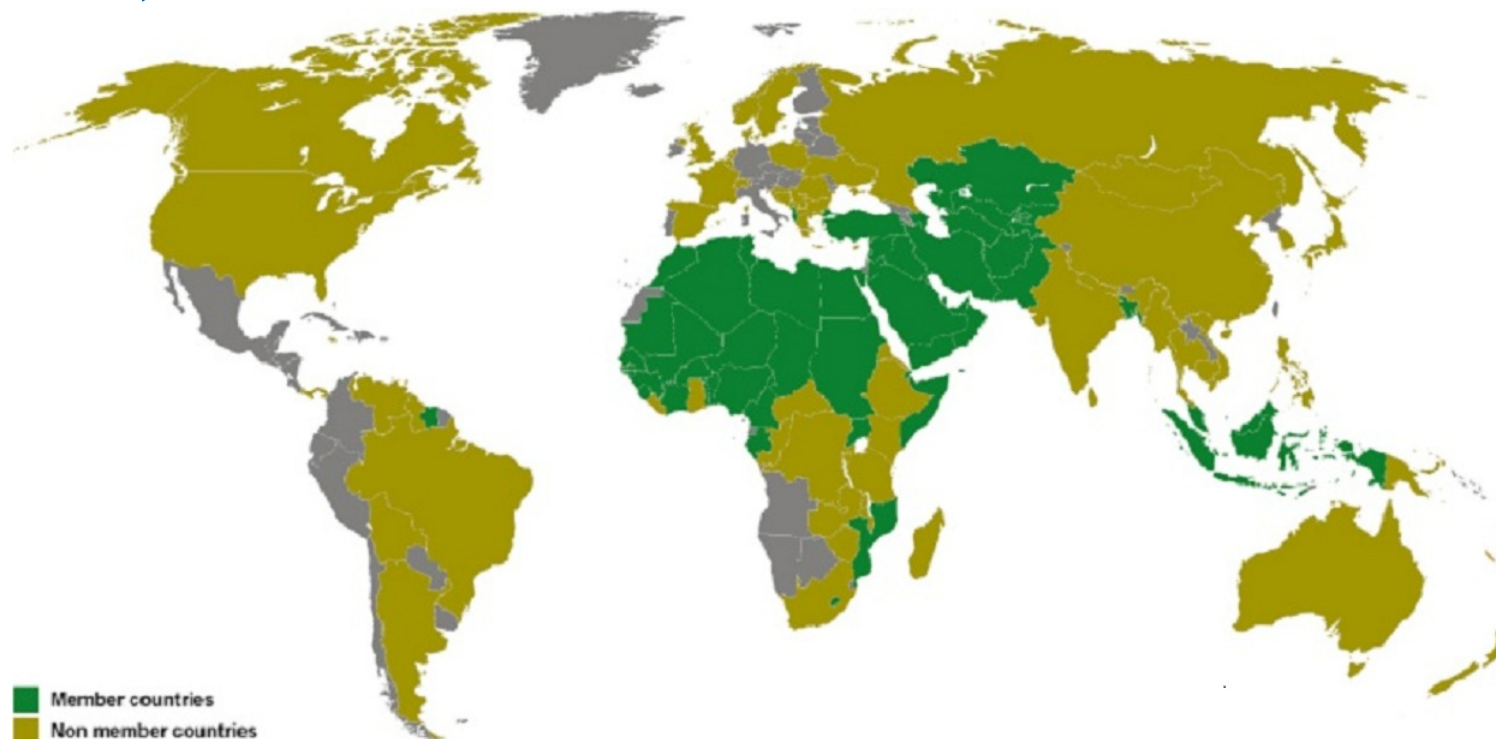
Promote  
South-South  
cooperation

# IsDB: A UNIQUE MODEL OF SOUTH-SOUTH COOPERATION (57 Members spread over 4 Continents)

# 57

## Member Countries

23 countries in 1975 →  
57 countries in 2016:  
Africa-27, Asia-26, Europe-2,  
Latin America-2,  
Newest Member: Guyana in  
Latin America

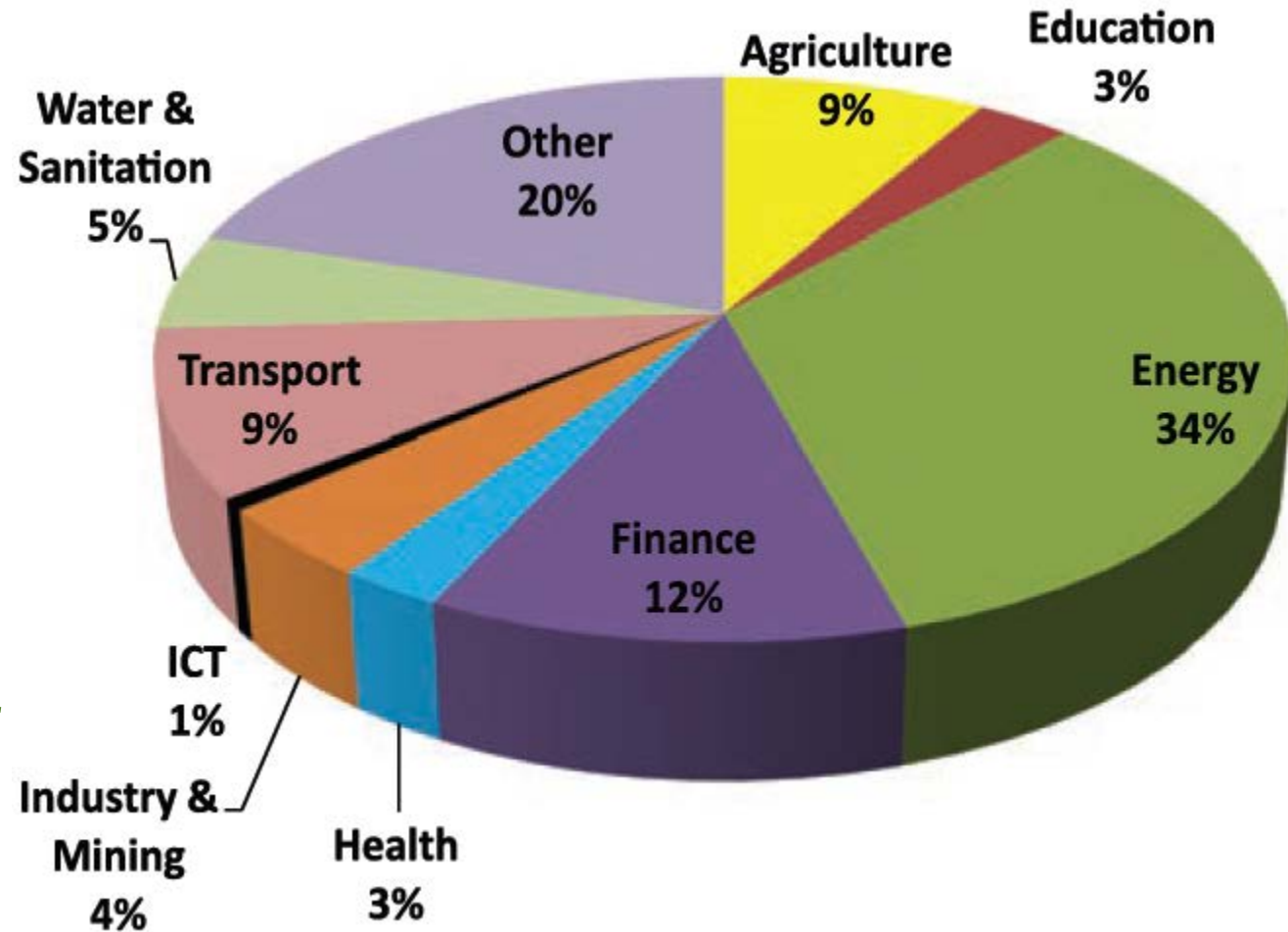


Member countries  
Non member countries

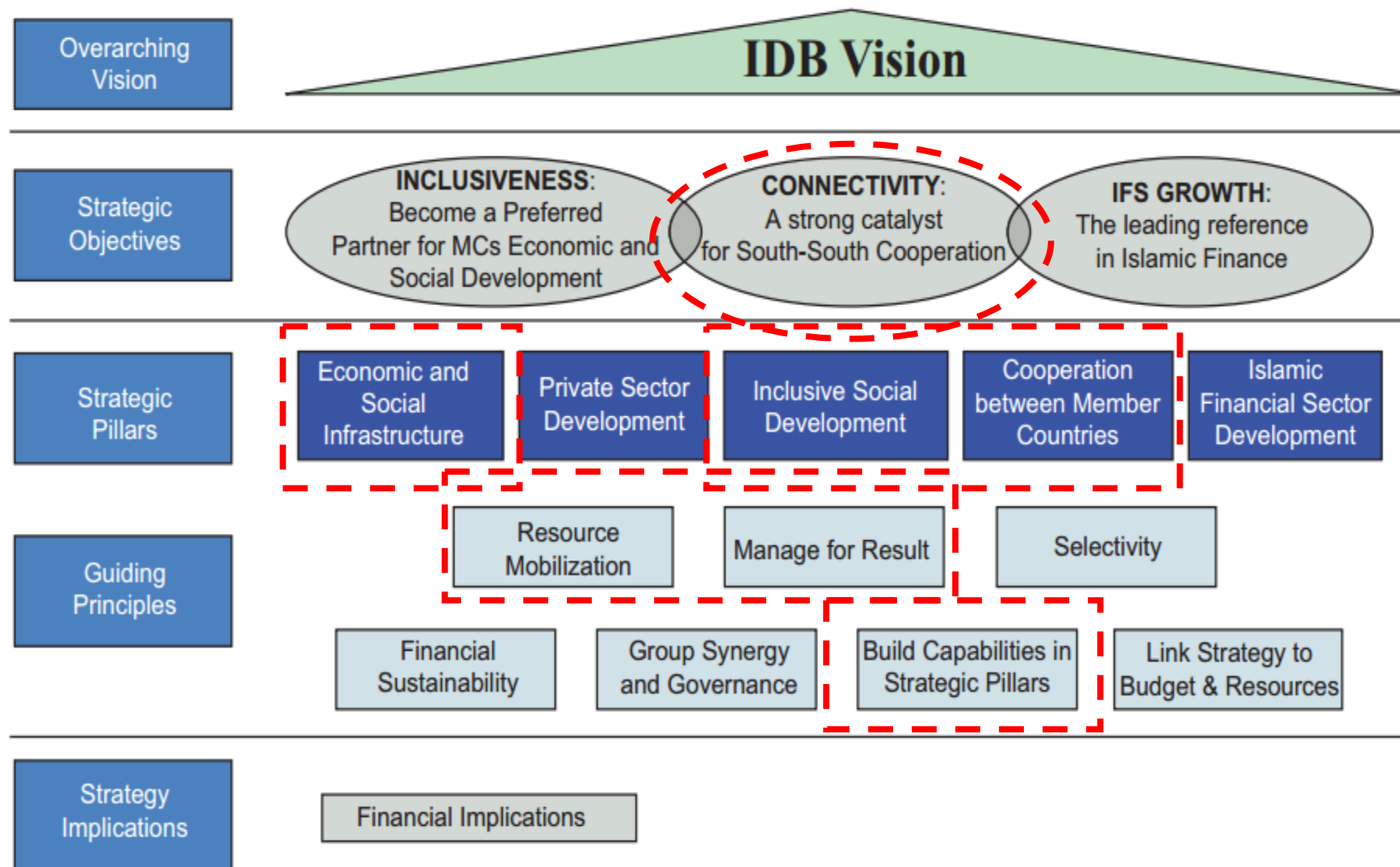
Afghanistan	Iraq	Senegal	Argentina	Ethiopia	Mayotte	South Africa
Albania	Jordan	Sierra Leone	Australia	Fiji	Mongolia	South Korea
Algeria	Kazakhstan	Somalia	Belgium	France	Montenegro	Spain
Azerbaijan	Kuwait	Sudan	Bolivia	Ghana	Myanmar	Sri Lanka
Bahrain	Kyrgyz Republic	Suriname	Bosnia-Herzegovina	Greece	Nepal	Sweden
Bangladesh	Lebanon	Syrian Arab Republic	Brazil	Grenada	The Netherlands	Switzerland
Benin	Libya	Tajikistan	Bulgaria	Guyana	New Caledonia	Tanzania
Brunei Darussalam	Malaysia	Togo	Burundi	India	New Zealand	Thailand
Burkina Faso	Maldives	Tunisia	Cambodia	Jamaica	Norway	Trinidad-Tobago
Cameroon	Mali	Turkey	Canada	Japan	Panama	Ukraine
Chad	Mauritania	Turkmenistan	Central African Republic	Kenya	Papua New Guinea	United Kingdom
Cote d'Ivoire	Morocco	U.A.E.	Uganda	Kibris	The Philippines	United States
Djibouti	Mozambique	Uganda	Uzbekistan	Kosovo	Poland	U.S Virgin Isles
Egypt	Niger	Union of Comoros	Yemen	Lesotho	Reunion	Vanuatu
Gabon	Nigeria			Liberia	Romania	Venezuela
Gambia	Oman			Macedonia	Russian Federation	Vietnam
Guinea	Pakistan			Madagascar	Rwanda	Zambia
Guinea Bissau	Palestine			Malawi	Seychelles	Zimbabwe
Indonesia	Qatar			Martinique	Singapore	
Iran, Islamic Republic	Saudi Arabia			Mauritius		

## KEY HIGHLIGHTS OF OPERATIONS FINANCING IN MEMBER COUNTRIES

- ▶ Since inception of IDB Group Net Approvals, reached US\$128.7 billion
- ▶ Energy and Trade Finance sectors accounted for the largest shares of US\$43.4 billion, US\$15.1 billion respectively,
- ▶ Followed by Transportation sector at US\$12.3 billion, and
- ▶ Agriculture US\$11.2 billion and Water Sanitation US\$ 6.5 billion.



# IsDBG 10 YEARS STRATEGIC FRAMEWORK (2015-2025)



# IsDB GLOBAL PRACTICES ORGANIZATION STRUCTURE

## ▶ Economic and Social Infrastructure

- ▶ Water
- ▶ Urban
- ▶ Energy
- ▶ Transport
- ▶ ICT
- ▶ Education
- ▶ Health
- ▶ Agriculture
- ▶ Rural Development

## ▶ Resilience and Social Development

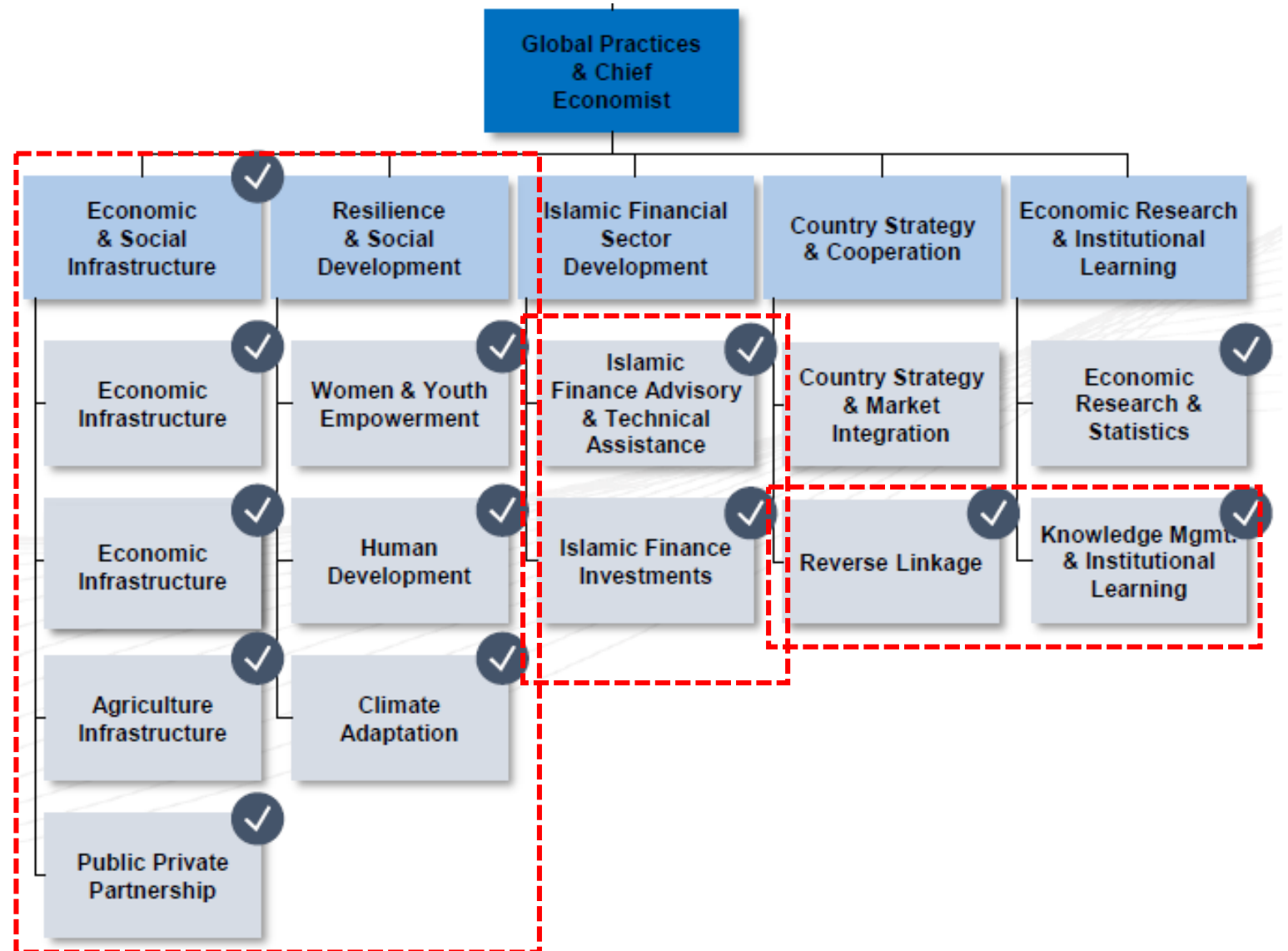
- ▶ Climate change

## ▶ Country Strategy and Cooperation

- ▶ Reverse Linkage

## ▶ Economic research and Institutional Learning

- ▶ Knowledge management and Institutional Learning





# IsDB TECHNICAL COOPERATION PROGRAM (TCP)

## ▶ SHORT TERM TECHNICAL COOPERATION PROGRAMS

- ❖ Expert Assignment
- ❖ Study Visit
- ❖ On-the-Job Training
- ❖ Workshops, Seminars

## ▶ LONG TERM TECHNICAL COOPERATION PROGRAMS

- ❖ Reverse Linkage Modality



# WHAT IS REVERSE LINKAGE

Is a cooperation mechanism where member countries, Research institutes are themselves involved to share knowledge, technology, expertise, best practices, etc.

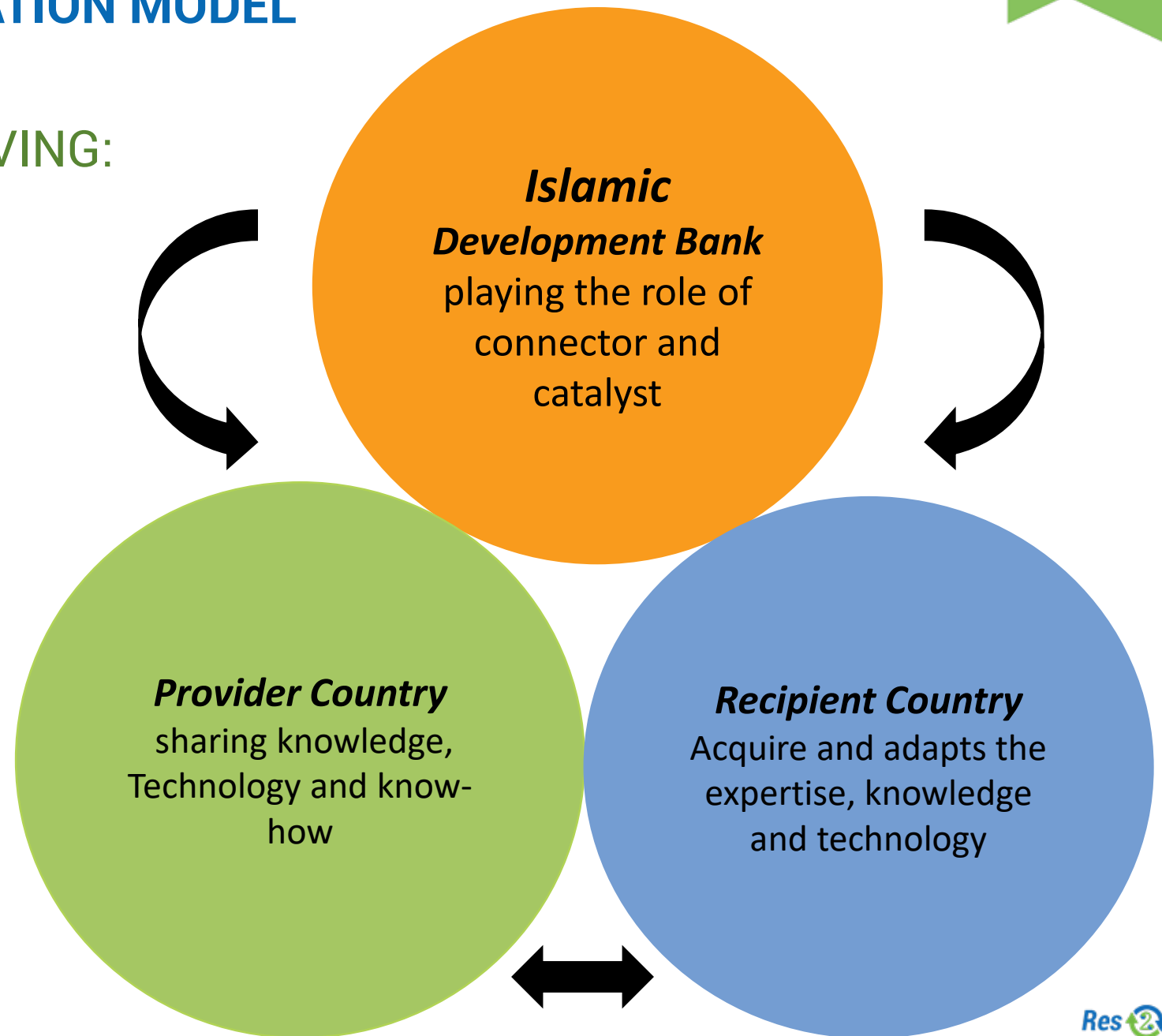
- ▶ Tripartite approach(at least); provider country, recipient country, and IDB as facilitator
- ▶ Institutional Capacity development at core
- ▶ Demand driven
- ▶ Project base approach
- ▶ Results oriented
- ▶ Mutually beneficial (win-win) arrangement



# IDB REVERSE LINKAGE COOPERATION MODEL

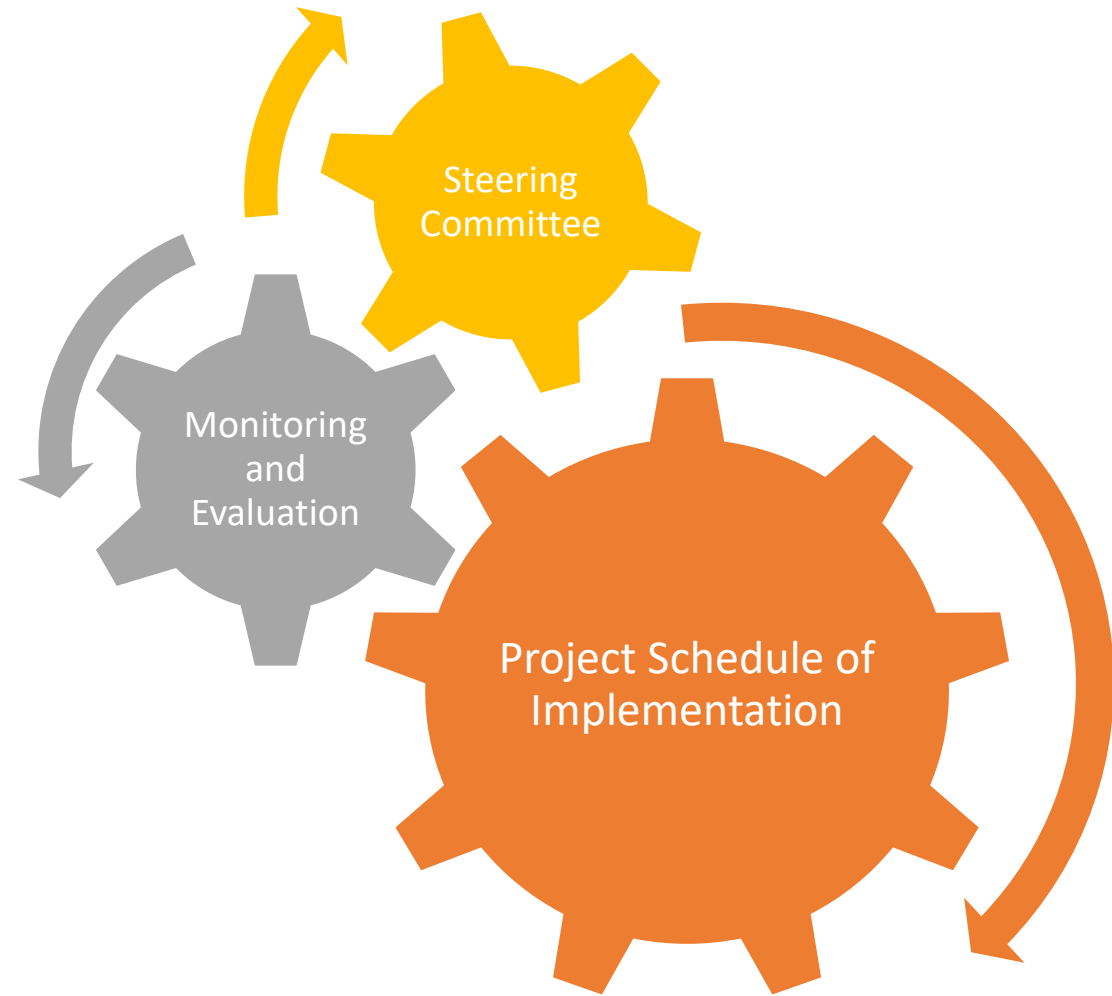
## ▶ TRIPARTITE APPROACH INVOLVING:

- ▶ Provider Country
- ▶ Recipient Country
- ▶ IDB as Connector



# THE PROCESS - IMPLEMENTATION

- ▶ **Initiation:** Identify provider and recipient institutions in provider and recipient countries: Match both institutions
- ▶ **Diagnostic Visit:** Peer to peer consultation among experts from provider and recipient institutions to identify capacity development needs of the recipient institution
- ▶ **Validation Visit:** Finalise the technical and financial aspects of the Reverse Linkage Project



Year 1

Year 2

Year 3

# RL Project between Burkina Faso (Recipient) and Morocco (Provider) on Water Quality Treatment



## ► THE CHALLENGE

Eutrophication affected many areas including the dams of Ziga and Loumbila in Burkina Faso

## ► DEMAND

National Office for Water and Sanitation (ONEA) of Burkina Faso had to solve this challenge

## ► THE SUPPLY

Morocco's National Office for Electricity and Potable Water (ONEE) is the main supplier of potable water in Morocco

## ► THE MATCHMAKING

IDB facilitated to match two institutions through Reverse Linkage Project

## ► THE PROJECT

*Goal: improve the capacity of (ONEA) of Burkina Faso to overcome the challenges it has faced*



## MAIN ACTIVITIES

- ▶ A set of training programs on water quality management for ONEA staff
- ▶ Procuring and installing advanced equipment for laboratories
- ▶ Establishing a new organizational structure for ONEA
- ▶ Introducing silver carp (fish) to reservoirs in the dams of Ziga and Loumbila Etc.

## PARTNERS INVOLVED

- ▶ The National Office for Water and Sanitation (ONEA), Burkina Faso.
- ▶ The National Office for Electricity and Potable Water (ONEE), Morocco.
- ▶ The Moroccan Agency for International Cooperation (AMCI).

## FINANCIAL CONTRIBUTIONS

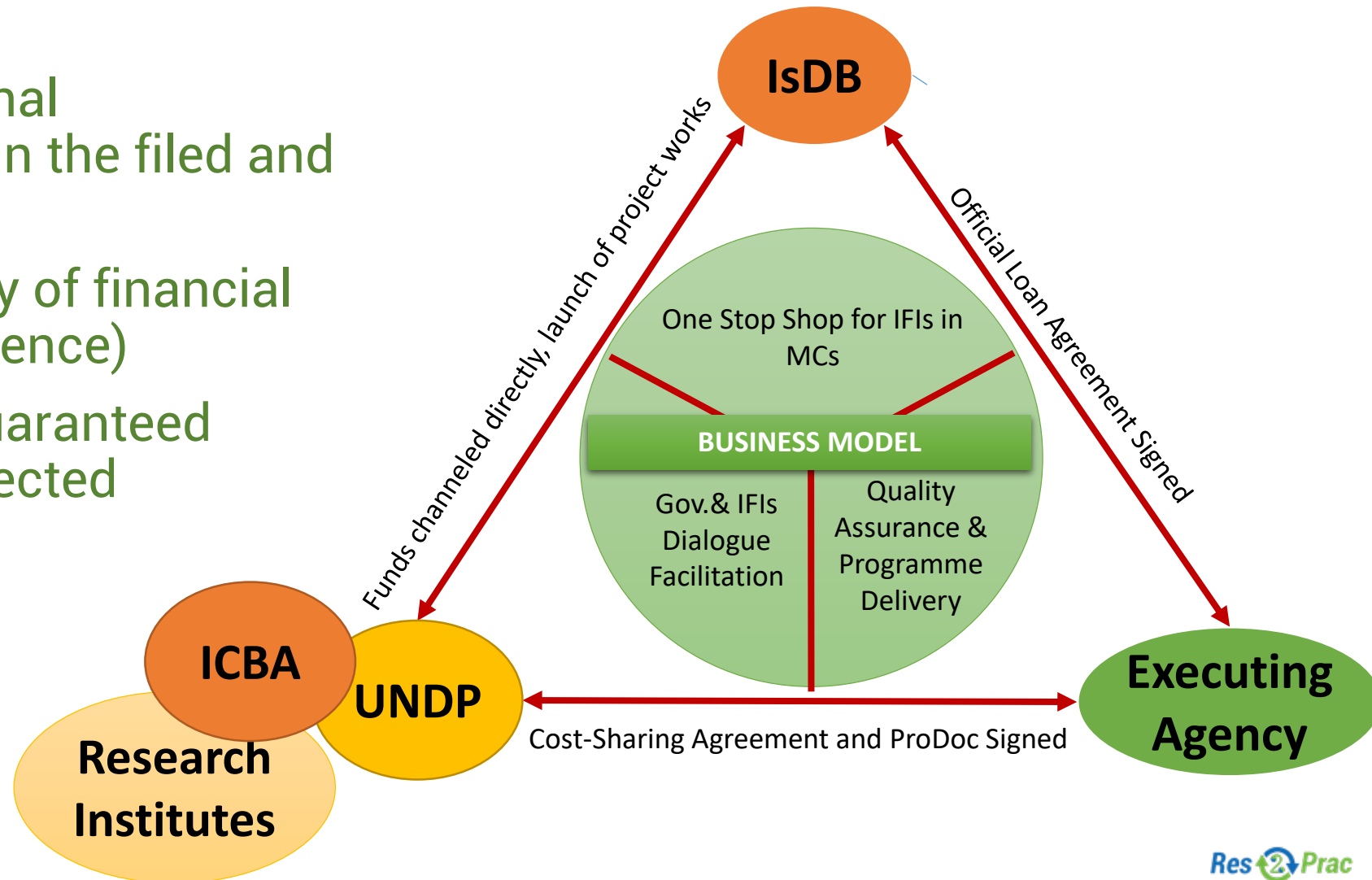
- Burkina Faso Contribution           \$300,000
- Morocco Contribution               \$300,000
- IsDB Contribution                    \$300,000



# Cooperation Model with Research Institute and UN Agencies in Practice

## KEY ADVANTAGES:

- 1) Partner trusted by National Government, stakeholders in the field and international organizations
- 2) Guaranteed transparency of financial performance (Country Presence)
- 3) Proven track record – guaranteed quality and delivery on expected outcomes





Thank You

شكراً

